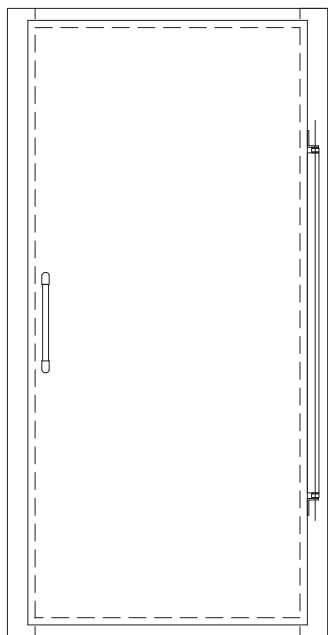
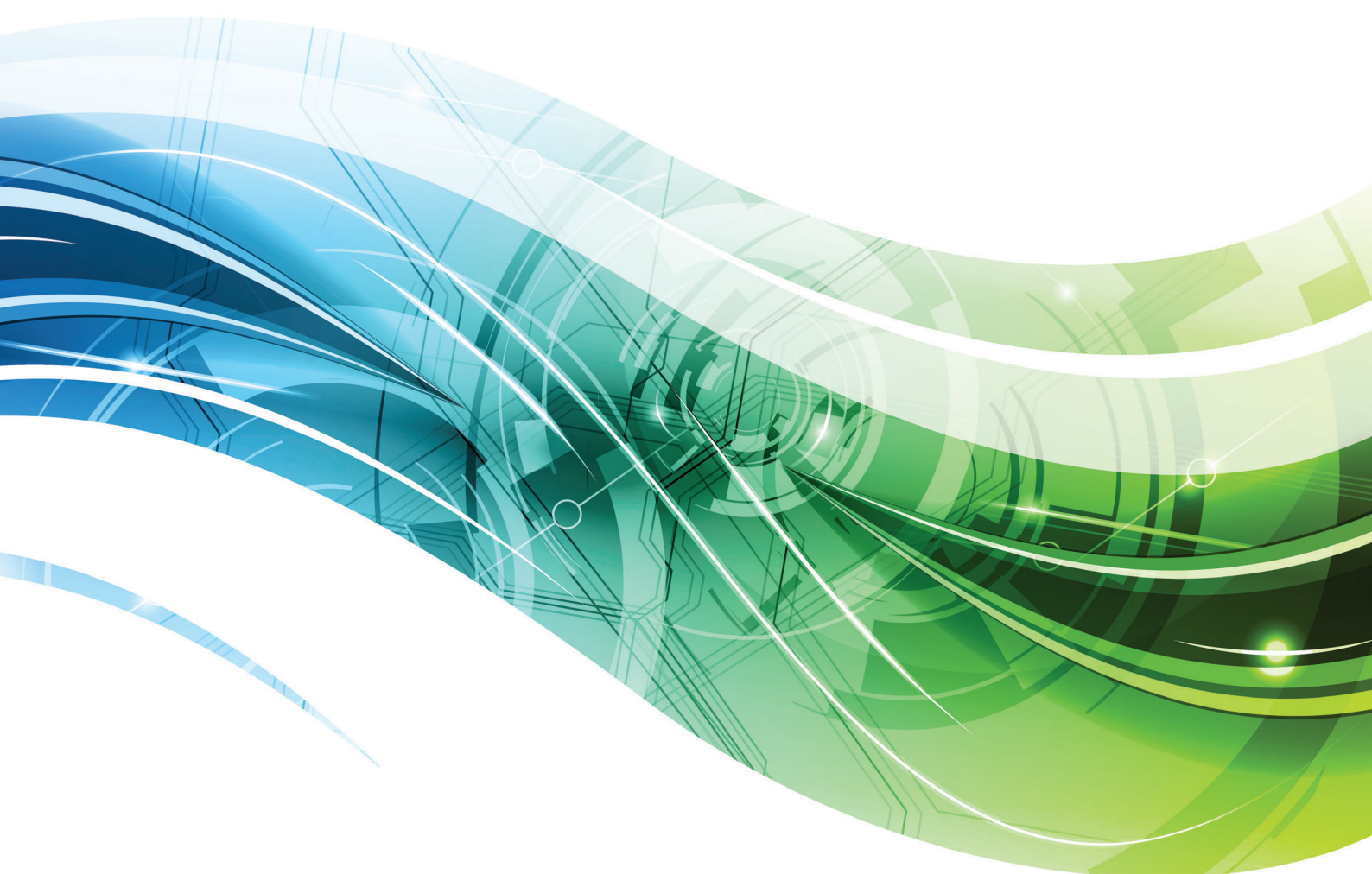


PORKKA



Technical data

M doors



Technical data

M doors

Construction

Frame

Insulated door frame profile. Surface hot-dip galvanised 1.5 mm steel sheet and epoxy powder painted or stainless steel. Two frame options: standard or renovation model. The renovation model is suitable for situations where the door leaf must not enter the clear opening further than the surface of the wall.

Door leaf

Insulation CFC- and HCFC free rigid and hard polyurethane with density approx 40 kg /m³. Insulation thickness 80 mm. Exterior and interior surfaces: hot-dip galvanised 0.6 mm steel sheet that is coated with foodsafe polyester, or optional stainless steel sheet surfaces.

Fittings

Self-closing torsion bar hinges, handle on the outside. Quick release bolt on the second door leaf on double-leaf doors.

NUMBER OF HINGES ON STANDARD M DOORS

| HINGE | TERM | NUMBER OF HINGES |
|---------------|---|------------------|
| Spring hinge | VAL 600 – 1300 and VAK ≤ 2200 (threshold door) | 1 |
| Spring hinge | VAL 600 – 1300 and VAK ≤ 2265 (sweeper gasket door) | 1 |
| Spring hinge | VAL 600 – 1300 and VAK > 2200 (threshold door) | 2 |
| Spring hinge | VAL 600-1300 and VAK > 2265 (sweeper gasket door) | 2 |
| Fermod 481 | VAL 600 – 1000 and VAK ≤ 2200 (threshold door) | 2 |
| Fermod 481 | VAL 600 – 1000 and VAK ≤ 2265 (sweeper gasket door) | 2 |
| Fermod 481 | VAL > 1000 or VAK > 2200 (threshold door) | 4 |
| Fermod 481 | VAL > 1000 or VAK > 2265 (sweeper gasket door) | 4 |
| HRS 4510/4511 | VAL 600 – 1200 and VAK < 2100 (threshold / sweeper gasket door) | 2 |
| HRS 4510/4511 | VAL ≥ 1200 and VAK < 2100 (threshold / sweeper gasket door) | 3 |
| HRS 4510/4511 | VAL < 1000 and VAK ≥ 2100 (threshold / sweeper gasket door) | 3 |
| HRS 4510/4511 | VAL ≥ 1000 and VAK ≥ 2100 (threshold / sweeper gasket door) | 4 |

ATTENTION!

Depending on the project, the number of hinges may differ from the number of hinges on standard doors.

Technical data

M doors

M DOOR MODELS

| MODEL | TYPE | HANDLE / PULL | HINGE | SEALING |
|---------|--|--|--|--|
| MODEL A | KHO-M KHO-M + window ³⁾ PHO-M PHO-M + window ³⁾ | Tube Handle ¹⁾ Tube Handle ¹⁾ Tube Handle ¹⁾ Tube Handle ¹⁾ | Spring hinge Spring hinge Spring hinge Spring hinge | Gasket Gasket Gasket Gasket |
| MODEL B | KHO-M KHO-M + window ³⁾ PHO-M PHO-M + window ³⁾ | Fermod 921 Fermod 921 Fermod 921 Fermod 921 | Fermod 481 Fermod 481 Fermod 481 Fermod 481 | EPDM rubber gasket EPDM rubber gasket EPDM rubber gasket EPDM rubber gasket |
| MODEL C | KHO-M KHO-M + window ³⁾ PHO-M PHO-M + window ³⁾ | Jumbo 6000 (chrome plated) ²⁾ Jumbo 6000 (chrome plated) ²⁾ Jumbo 6000 (chrome plated) ²⁾ Jumbo 6000 (chrome plated) ²⁾ | HRS 4510/4511(chrome plated) HRS 4510/4511(chrome plated) HRS 4510/4511(chrome plated) HRS 4510/4511(chrome plated) | EPDM rubber gasket EPDM rubber gasket EPDM rubber gasket EPDM rubber gasket |
| MODEL D | KHO-M KHO-M + window ³⁾ PHO-M PHO-M + window ³⁾ | - - - - | - - - - | - - - - |
| MODEL E | KHO-M KHO-M + window ³⁾ PHO-M PHO-M + window ³⁾ | Jumbo 6000 (chrome plated) ²⁾ Jumbo 6000 (chrome plated) ²⁾ Jumbo 6000 (chrome plated) ²⁾ Jumbo 6000 (chrome plated) ²⁾ | Spring hinge Spring hinge Spring hinge Spring hinge | Gasket Gasket Gasket Gasket |
| MODEL G | KHO-M KHO-M + window ³⁾ PHO-M PHO-M + window ³⁾ | Tube Handle or Fermod 621 or 921 Tube Handle or Fermod 621 or 921 Tube Handle or Fermod 621 or 921 Tube Handle or Fermod 621 or 921 | Spring hinge Spring hinge Spring hinge Spring hinge | Gasket Gasket Gasket Gasket |

ATTENTION! All doors can be fitted with a narrow tempered window as a standard. In freezer room doors the window is heated.

1) Standard delivery without lock. Locksystem option Abloy RI 211 (PR52)

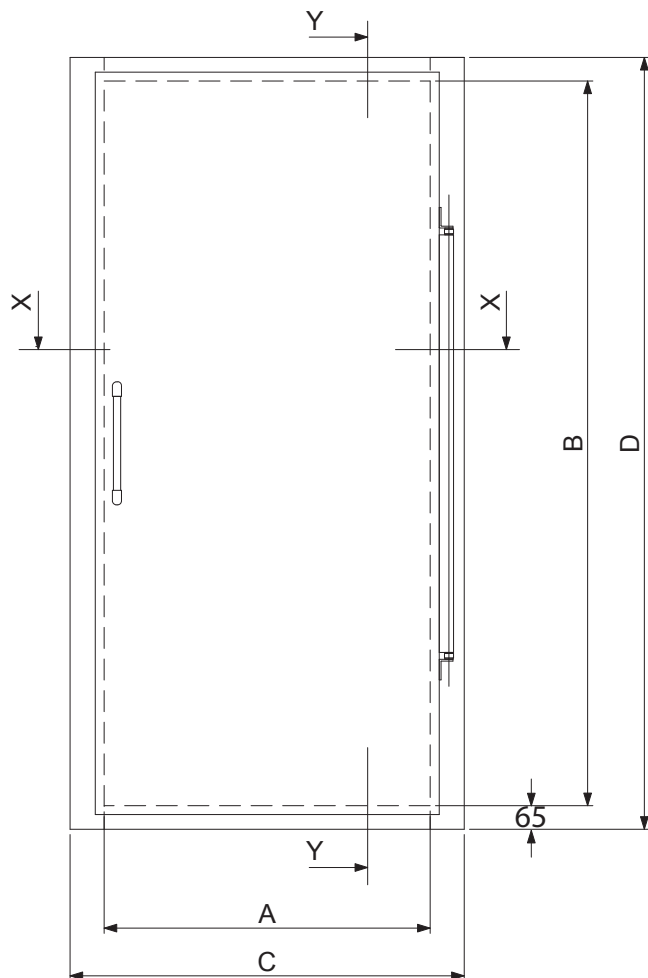
2) Standard delivery with standard lock (Handle BZ41). Locksystem options Abloy (Handle CA36, lock cylinder CU74) or Trioiving (Handle BW00, lock cylinder BZ27)

3) 3 different window sizes available. See technical data Windows for Hinged Doors

Technical data

M doors

Single-leaf threshold door dimensions



| THRESHOLD DOOR | CLEAR OPENING SIZE (A x B) | FRAME DIMENSIONS (C x D) |
|------------------|-------------------------------|-----------------------------|
| KHO-/PHO-MS 600 | 600 x 1850 | 788 x 1980 |
| KHO-/PHO-MS 700 | 700 x 1850 | 888 x 1980 |
| KHO-/PHO-M 700 | 700 x 2000 | 888 x 2130 |
| KHO-/PHO-M 800 | 800 x 2000 | 988 x 2130 |
| KHO-/PHO-M 900 | 900 x 2000 | 1088 x 2130 |
| KHO-/PHO-M 1000 | 1000 x 2000 | 1188 x 2130 |
| KHO-/PHO-M 1100 | 1100 x 2000 | 1288 x 2130 |
| KHO-/PHO-M 1200 | 1200 x 2000 | 1388 x 2130 |
| KHO-/PHO-MS 1300 | 1300 x 2000 | 1488 x 2130 |

Panel Cutout dimensions = clear opening size

A = clear opening width

B = clear opening height

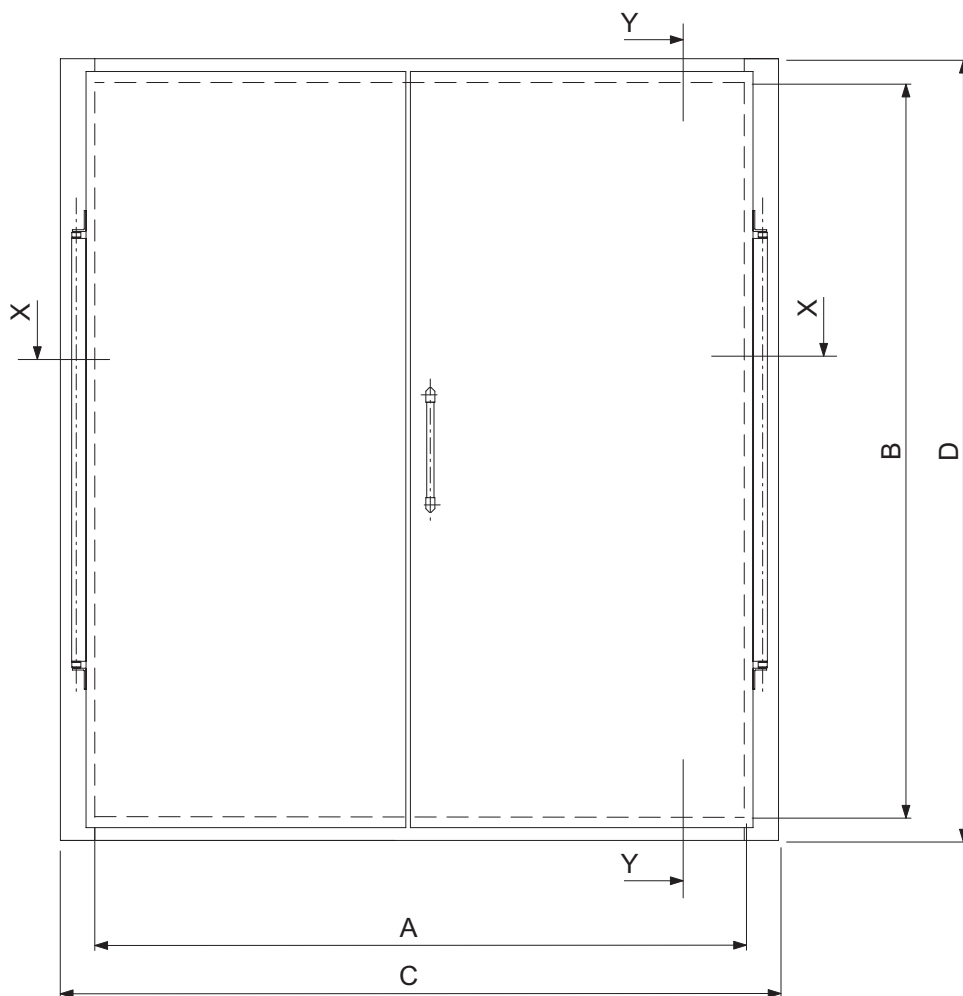
Mounting opening tolerances: (mm) A -0 +5, B -0 +5.

Doors are also manufactured in dimensions that divert from those in the table.

Technical data

M doors

Double-leaf threshold door dimensions



| TYPE OF DOOR WITH A THRESHOLD | SIZE OF DOOR OPENING (A x B) | EXTERNAL SIZE OF FRAME (C x D) |
|-------------------------------|---------------------------------|-----------------------------------|
| KHPO-M 1000 | 1000 x 2000 | 1188 x 2130 |
| KHPO-M 1100 | 1100 x 2000 | 1288 x 2130 |
| KHPO-M 1200 | 1200 x 2000 | 1388 x 2130 |
| KHPO-M 1300 | 1300 x 2000 | 1488 x 2130 |
| KHPO-M 1400 | 1400 x 2000 | 1588 x 2130 |
| KHPO-M 1500 | 1500 x 2000 | 1688 x 2130 |
| ... | ... | ... |
| ... | ... | ... |
| KHPO-M 2600 | 2600 x 2000 | 2788 x 2130 |

Panel Cutout dimensions = clear opening size

A = clear opening width

B = clear opening height

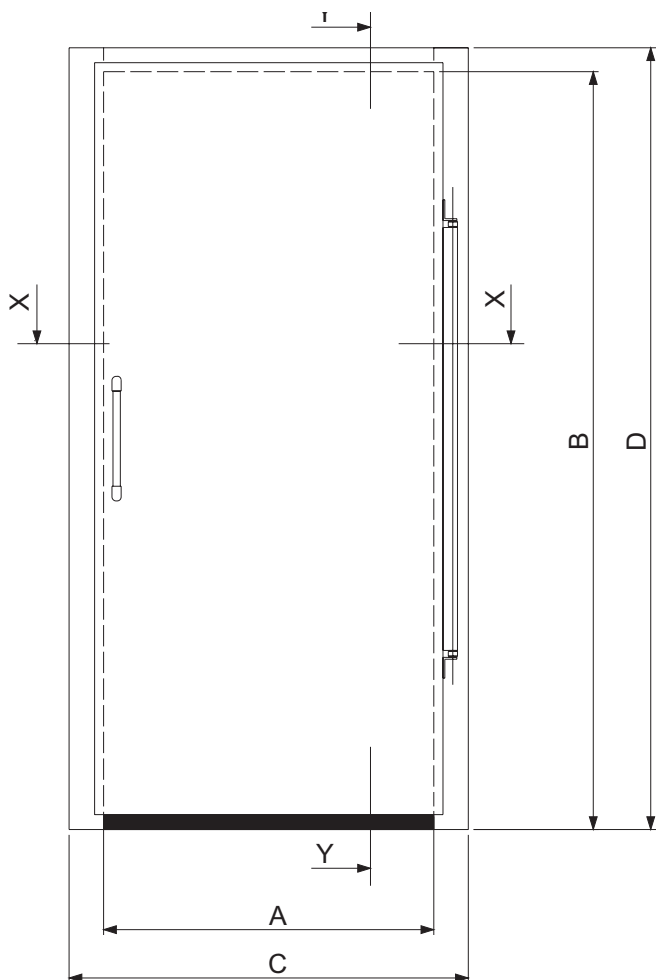
Mounting opening tolerances: (mm) A -0 +5, B -0 +5.

Doors are also manufactured in dimensions that divert from those in the table.

Technical data

M doors

Single-leaf sweeper gasket door dimensions



| SWEEPER GASKET DOOR | CLEAR OPENING SIZE (A x B) | FRAME DIMENSIONS (C x D) |
|---------------------|-------------------------------|-----------------------------|
| KHO-/PHO-MS 600 | 600 x 1915 | 788 x 1980 |
| KHO-/PHO-MS 700 | 700 x 1915 | 888 x 1980 |
| KHO-/PHO-M 700 | 700 x 2065 | 888 x 2130 |
| KHO-/PHO-M 800 | 800 x 2065 | 988 x 2130 |
| KHO-/PHO-M 900 | 900 x 2065 | 1088 x 2130 |
| KHO-/PHO-M 1000 | 1000 x 2065 | 1188 x 2130 |
| KHO-/PHO-M 1100 | 1100 x 2065 | 1288 x 2130 |
| KHO-/PHO-M 1200 | 1200 x 2065 | 1388 x 2130 |
| KHO-/PHO-M 1300 | 1300 x 2065 | 1488 x 2130 |

Panel Cutout dimensions = clear opening size

A = clear opening width

B = clear opening height

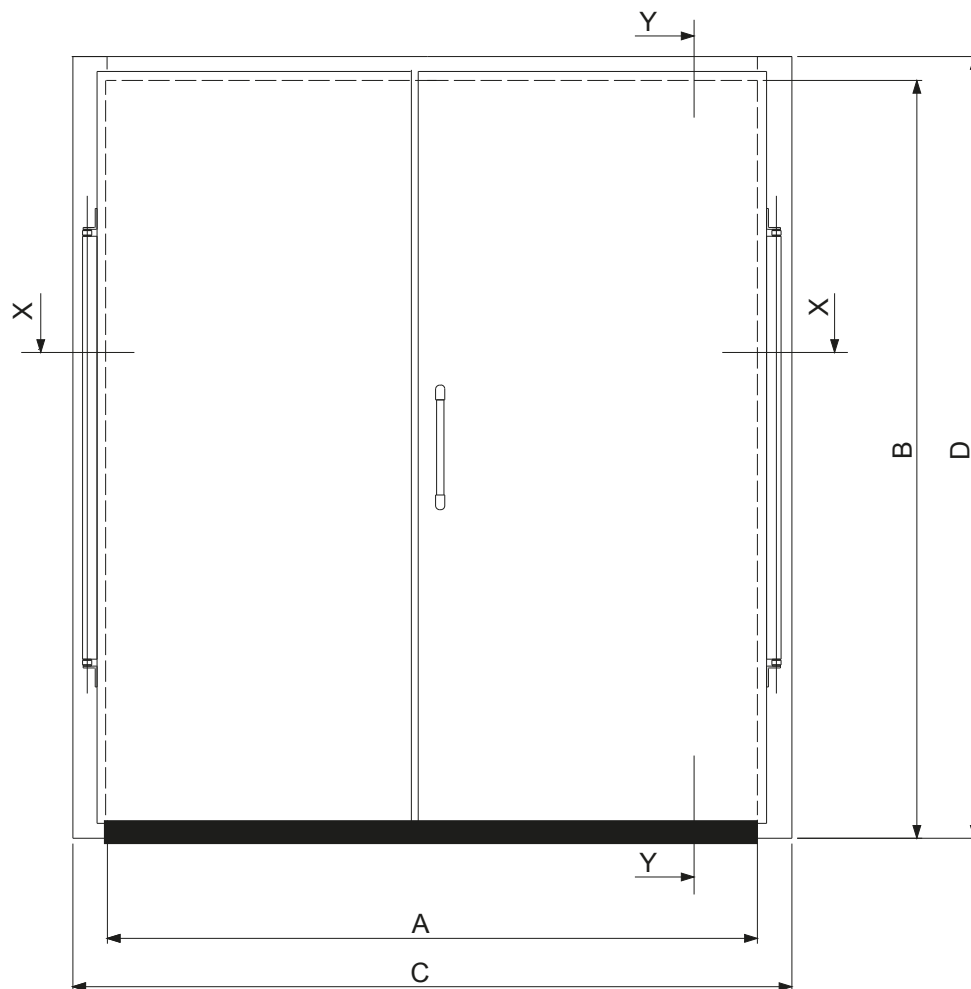
Mounting opening tolerances: (mm) A -0 +5, B -0 +5.

Doors are also manufactured in dimensions that divert from those in the table.

Technical data

M doors

Double-leaf sweeper gasket door dimensions



| SWEEPER GASKET DOOR | CLEAR OPENING SIZE (A x B) | FRAME DIMENSIONS (C x D) |
|---------------------|----------------------------|--------------------------|
| KHPO-M 1000 | 1000 x 2065 | 1188 x 2130 |
| KHPO-M 1100 | 1100 x 2065 | 1288 x 2130 |
| KHPO-M 1200 | 1200 x 2065 | 1388 x 2130 |
| KHPO-M 1300 | 1300 x 2065 | 1488 x 2130 |
| KHPO-M 1400 | 1400 x 2065 | 1588 x 2130 |
| KHPO-M 1500 | 1500 x 2065 | 1688 x 2130 |
| ... | ... | ... |
| ... | ... | ... |
| KHPO-M 2600 | 2600 x 2065 | 2788 x 2130 |

Panel Cutout dimensions = clear opening size

A = clear opening width

B = clear opening height

Mounting opening tolerances: (mm) A -0 +5, B -0 +5.

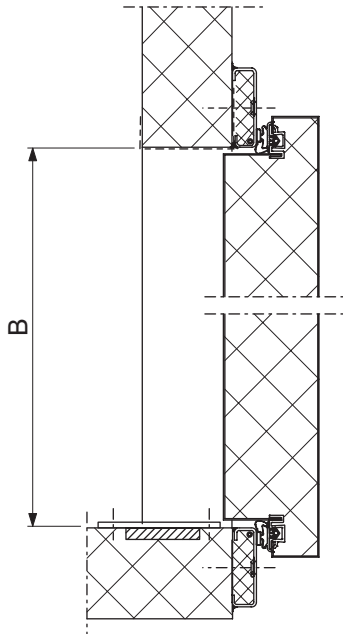
Doors are also manufactured in dimensions that divert from those in the table.

Technical data

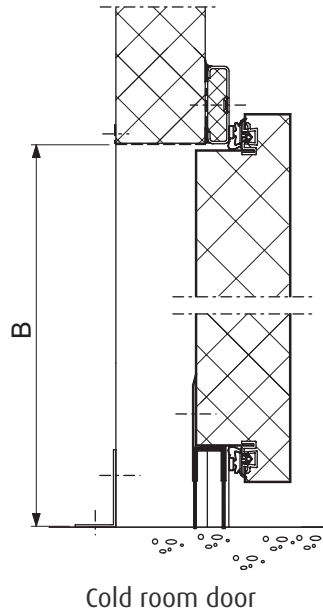
M doors

Single-leaf door cuttings

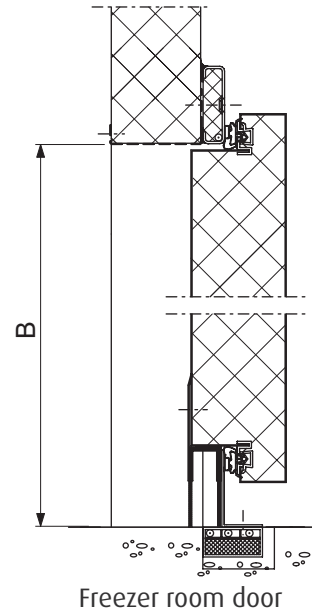
Threshold door



Sweeper gasket doors

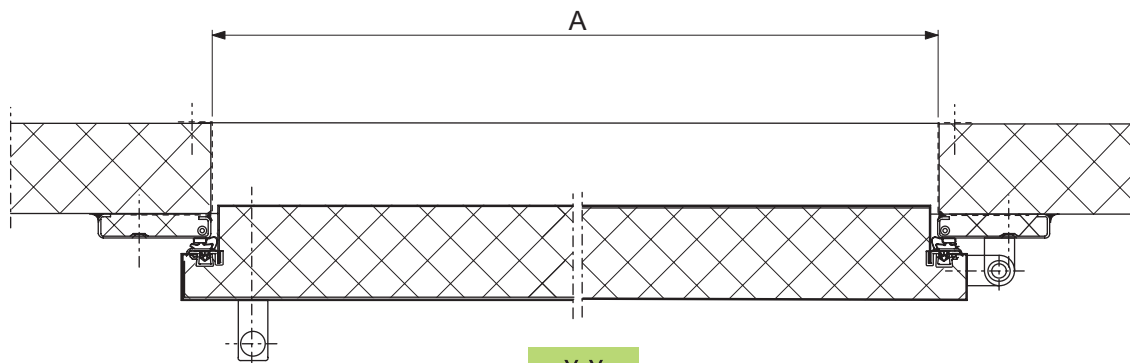


Cold room door



Freezer room door

Y-Y



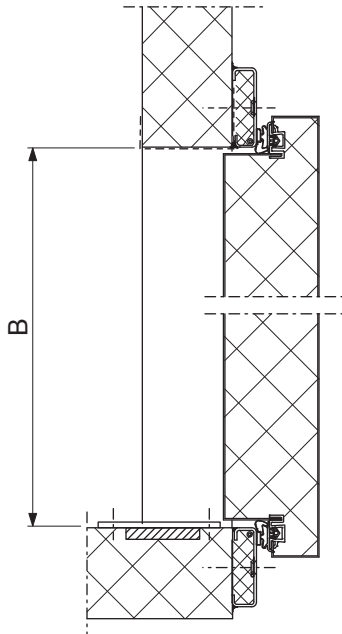
X-X

Technical data

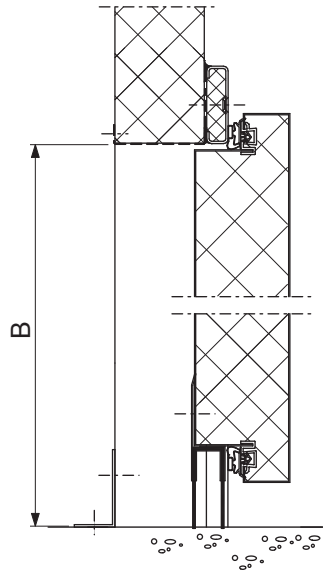
M doors

Double-leaf door cuttings

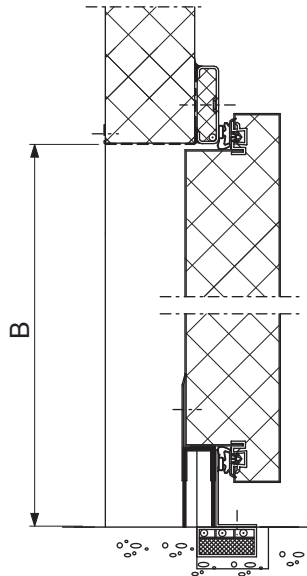
Threshold door



Sweeper gasket doors

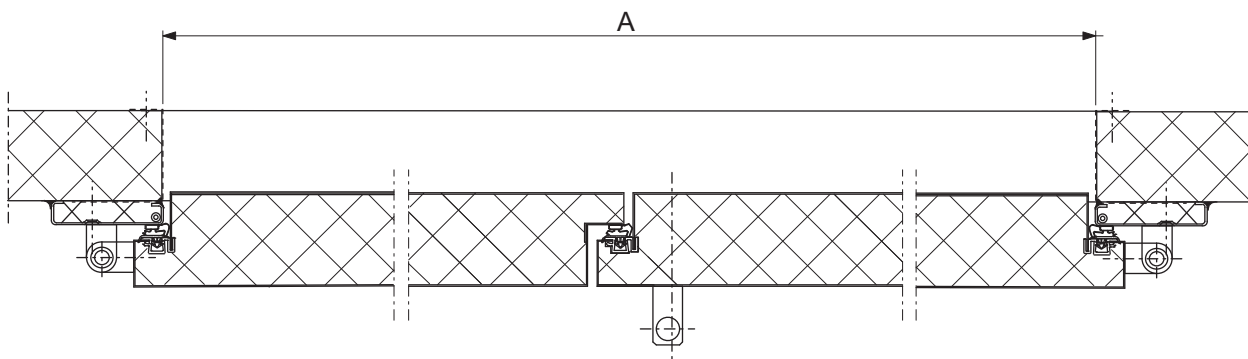


Cold room door



Freezer room door

Y-Y

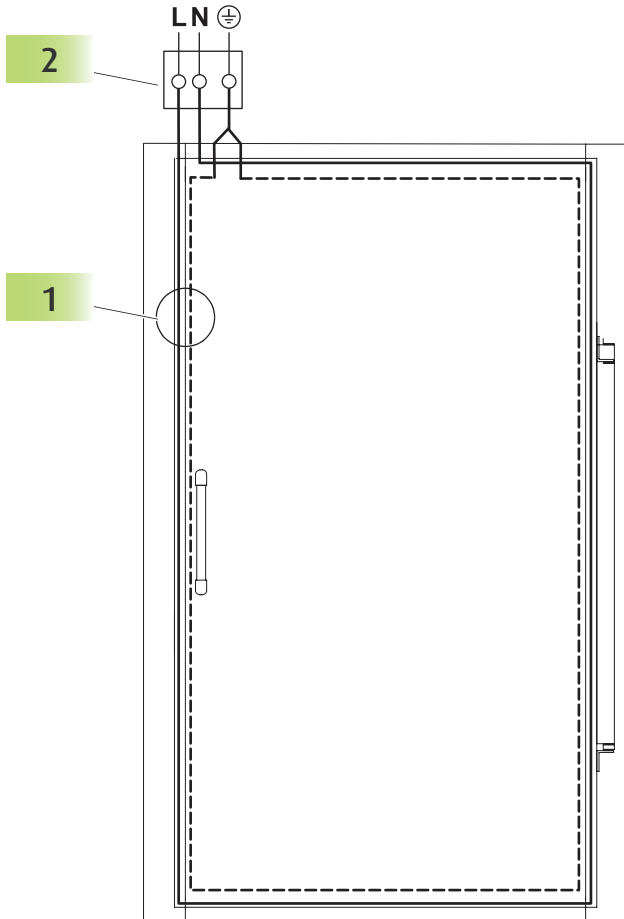


X-X

Technical data

M doors

Electric connections



A heating cable is in the freezer room door (PHO-M) frame (1), on sweeper gasket doors also inside the threshold profile in the floor. The connecting box (2) is included in the delivery.

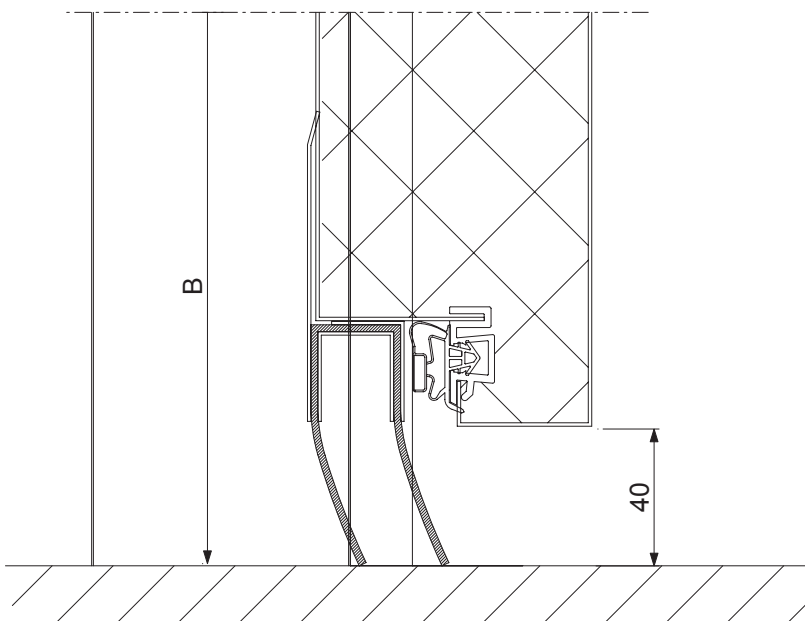
- Voltage..... 230VAC
- Connected load..... c. 150W

Technical data

M doors

M DOORS - DETAILS

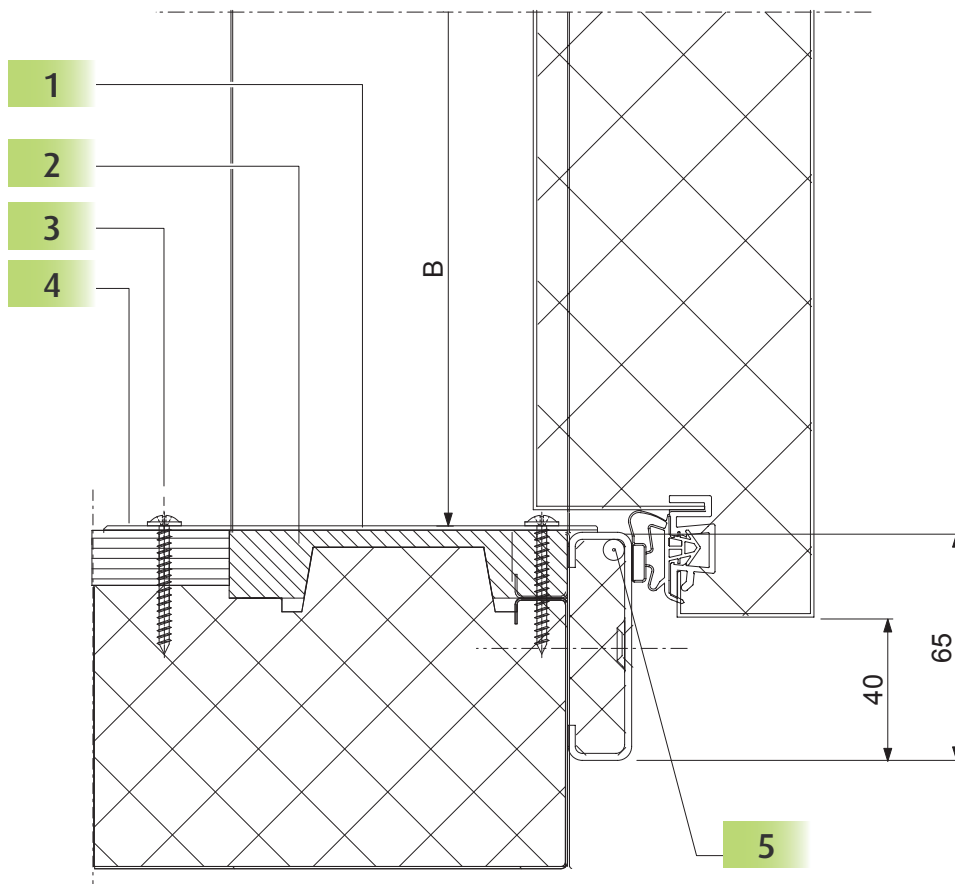
Threshold cutting, KHO-M sweeper gasket door



Technical data

M doors

KHO-M / PHO-M threshold door

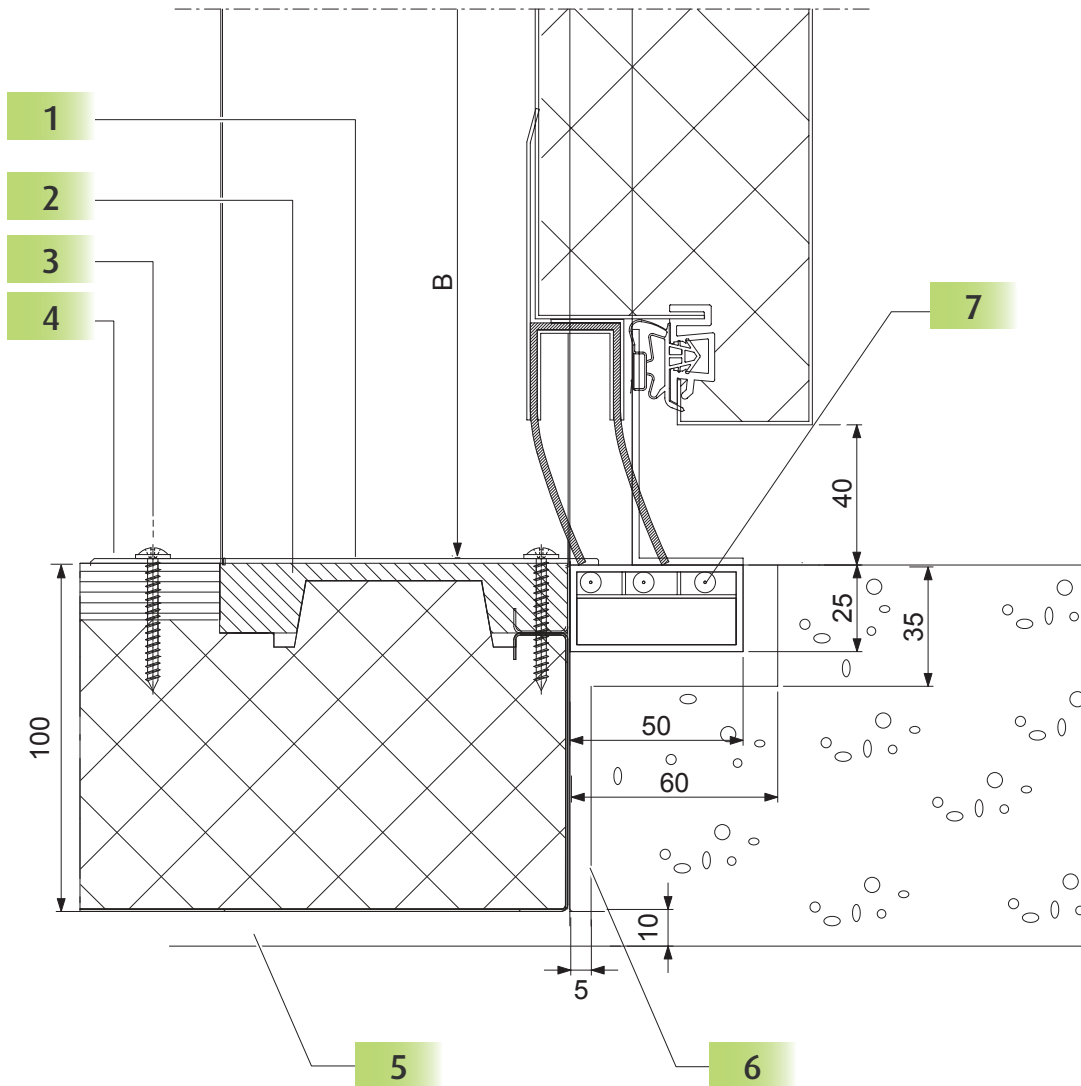


- 1. Threshold plate AISI 304 Thickness of 2 mm
- 2. Supporting plywood $s = 9$ mm
- 3. Pop rivet $\varnothing 3,2 \times 15$
- 4. Silicone mass underneath the threshold plate
- 5. Heating cable

Technical data

M doors

Recessed floor, PH0-M sweeper gasket door

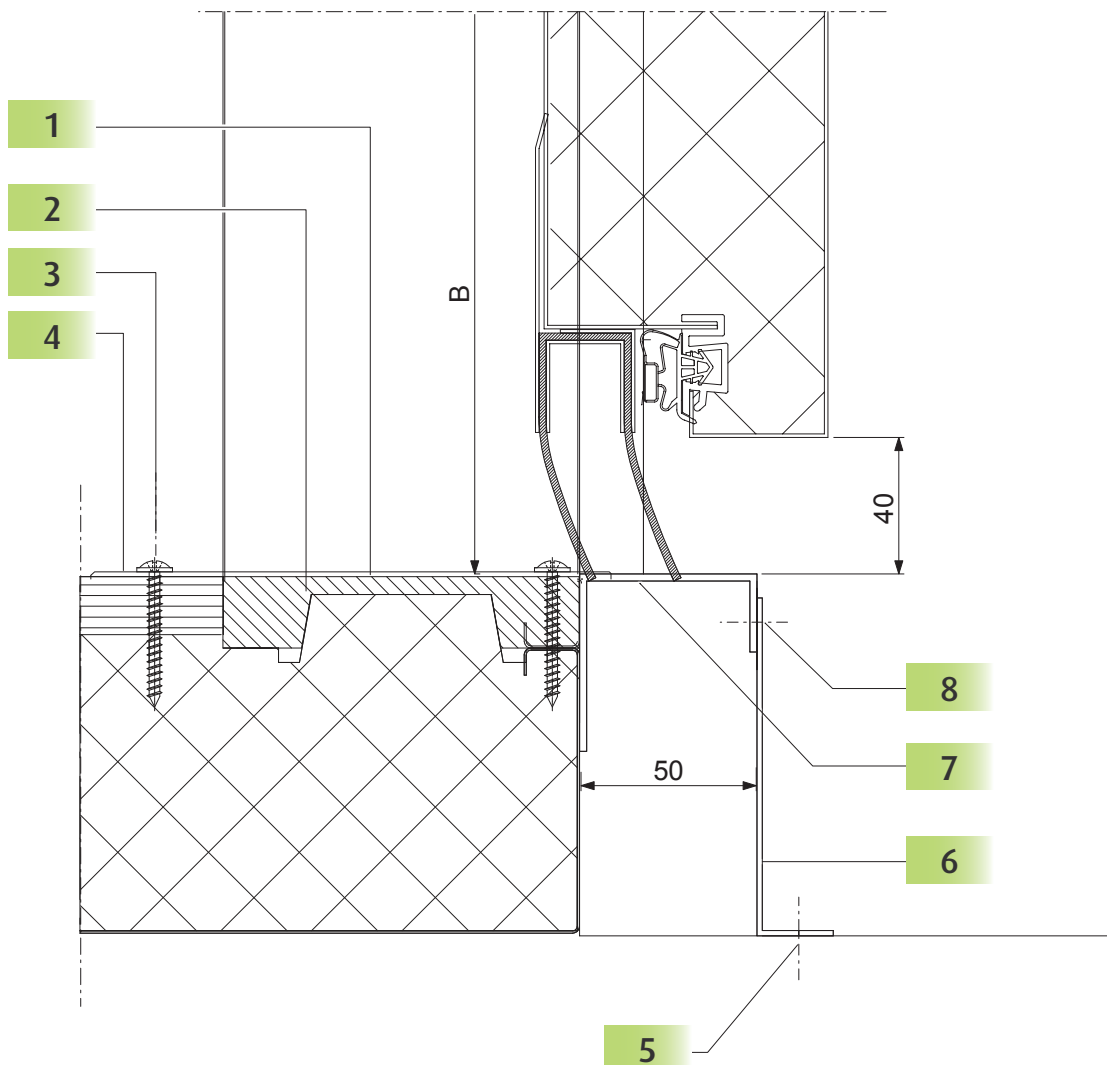


1. Threshold plate AISI 304 Thickness of 2 mm
2. Supporting plywood $s = 9$ mm
3. Pop rivet $\varnothing 3,2 \times 15$
4. Silicone mass underneath the threshold plate
5. Levelling filler
6. Filler
7. Heating cable

Technical data

M doors

Removable ramp, KHO-M sweeper gasket door

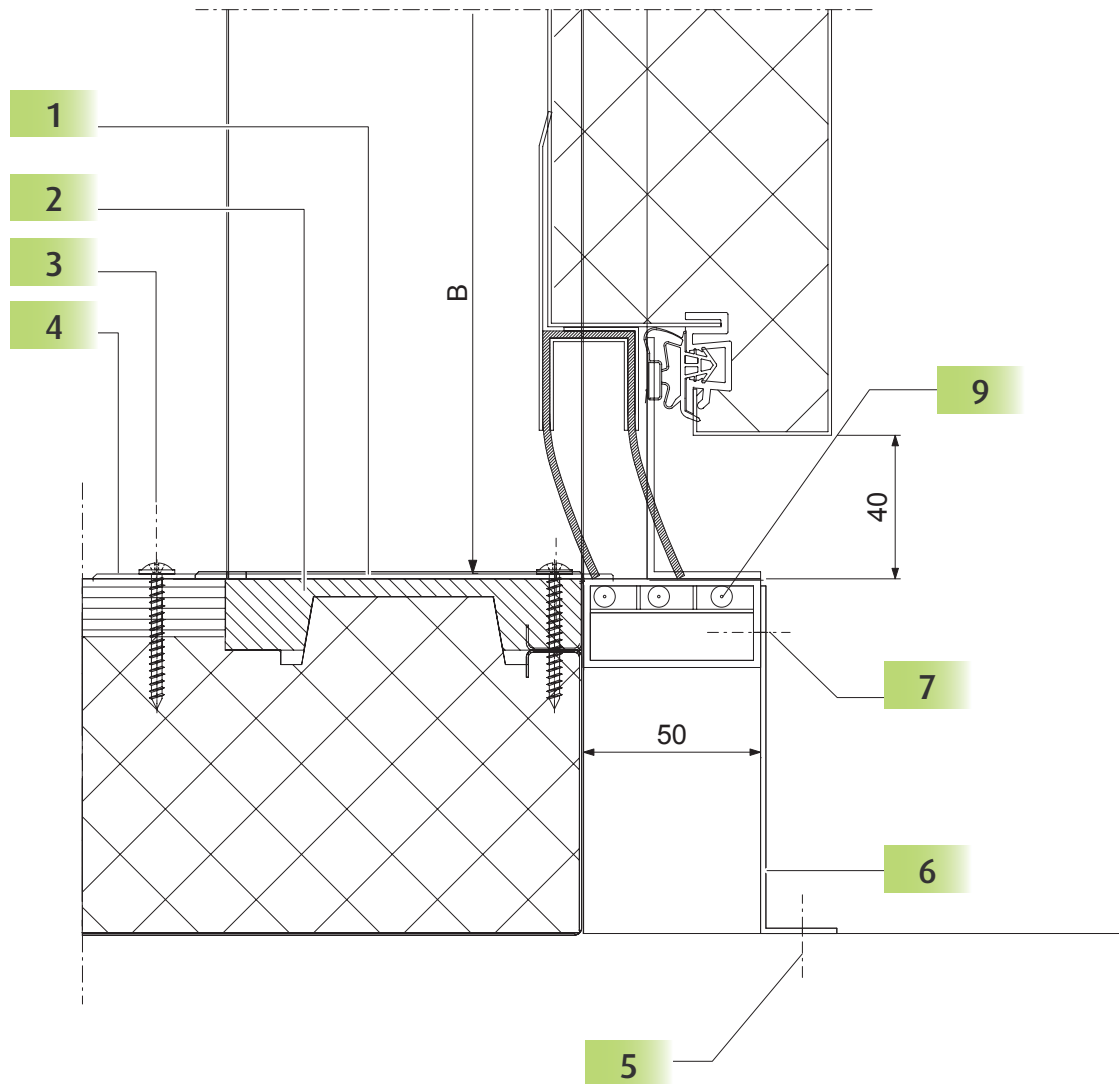


1. Threshold plate AISI 304 Thickness of 2 mm
2. Supporting plywood $s = 9$ mm
3. Pop rivet $\text{Ø}3.2 \times 15$
4. Silicone mass underneath the threshold plate
5. Nail plug $\text{Ø}6 \times 40$
6. Cover plate (B38009)
7. Cover Plate (B37897)
8. Plate screw $\text{Ø}4.8 \times 16$

Technical data

M doors

Removable ramp, PHO-M sweeper gasket door

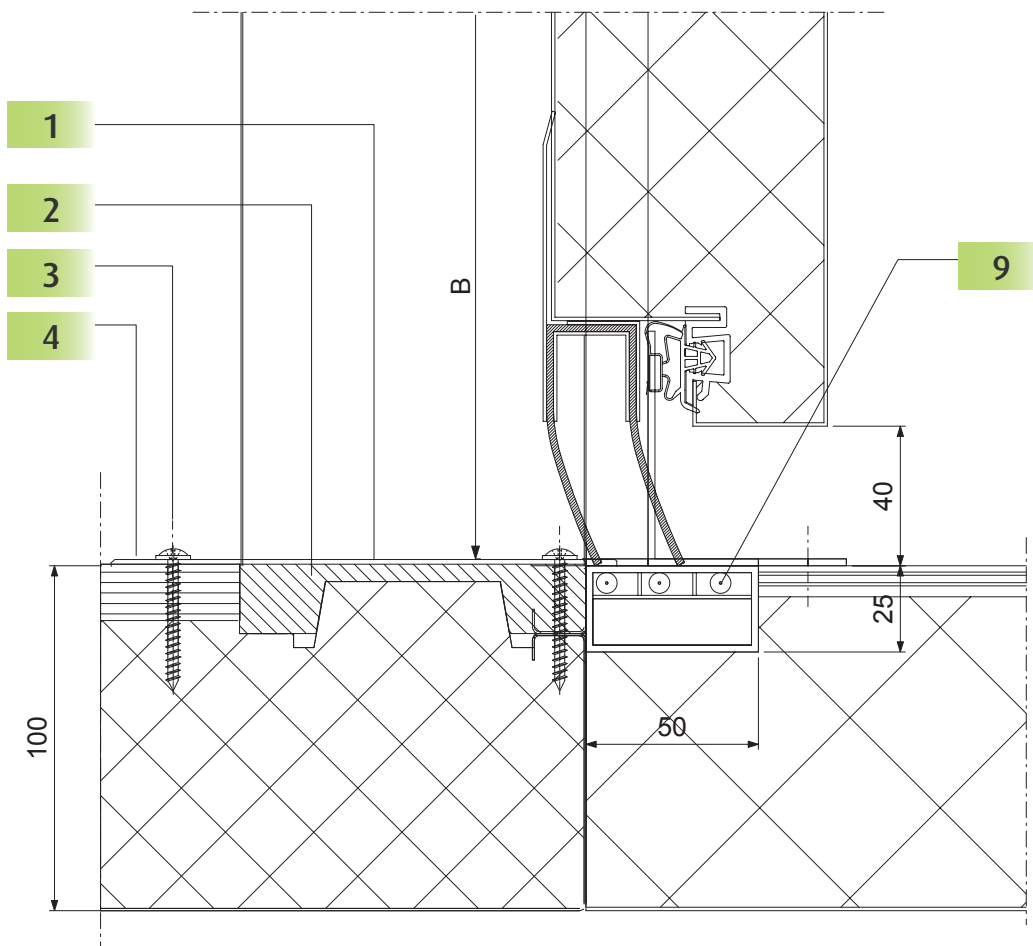


1. Threshold plate AISI 304 Thickness of 2 mm
2. Supporting plywood $s = 9$ mm
3. Pop rivet $\text{Ø}3.2 \times 15$
4. Silicone mass underneath the threshold plate
5. Nail plug $\text{Ø}6 \times 40$
6. Cover plate (B38009)
7. Cover Plate (B37897)
8. Plate screw $\text{Ø}4.8 \times 16$
9. Heating cable

Technical data

M doors

Door between cold room and freezer room

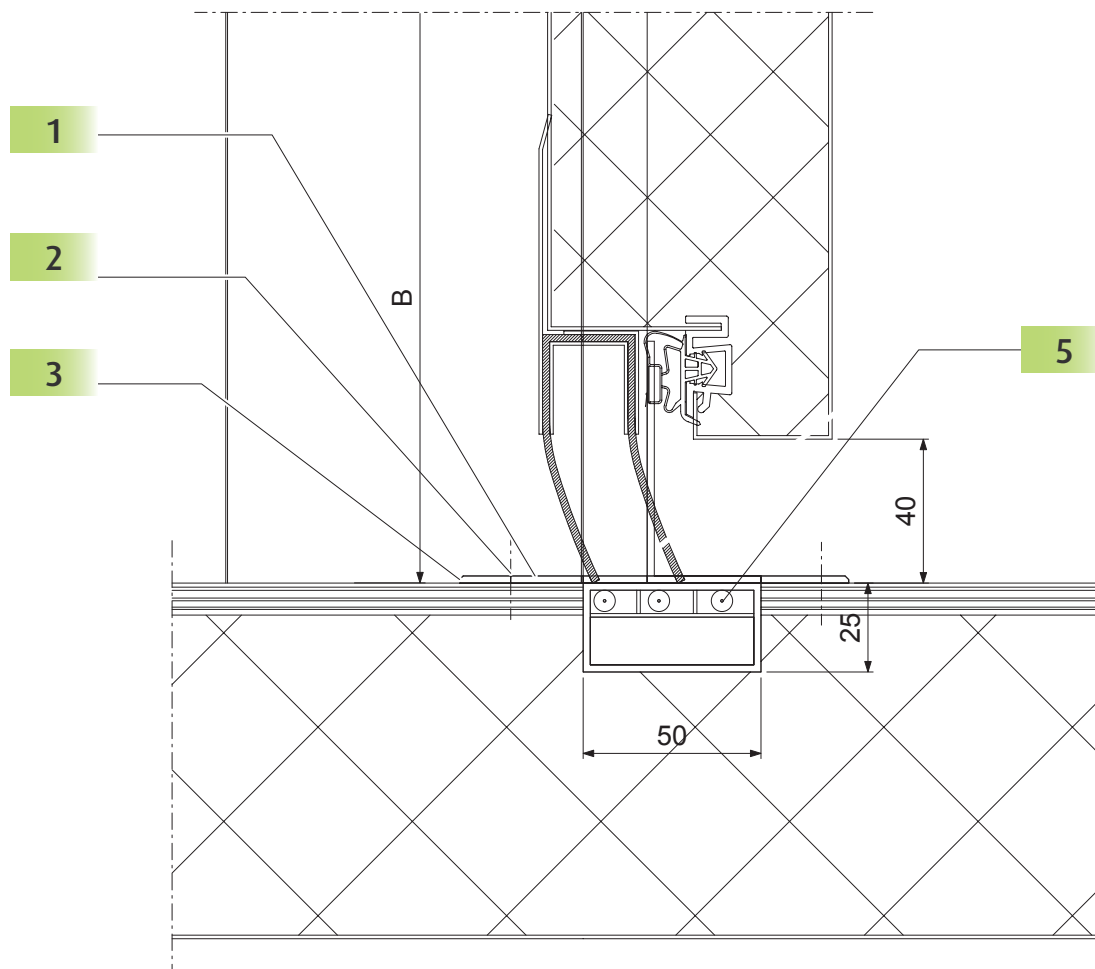


1. Threshold plate AISI 304 Thickness of 2 mm
2. Supporting plywood $s = 9$ mm
3. Pop rivet $\text{Ø}3.2 \times 15$
4. Silicone mass underneath the threshold plate
5. Nail plug $\text{Ø}6 \times 40$
6. Cover plate (B38009)
7. Cover Plate (B37897)
8. Plate screw $\text{Ø}4.8 \times 16$
9. Heating cable

Technical data

M doors

Door in a partition wall, PH0-M sweeper gasket door

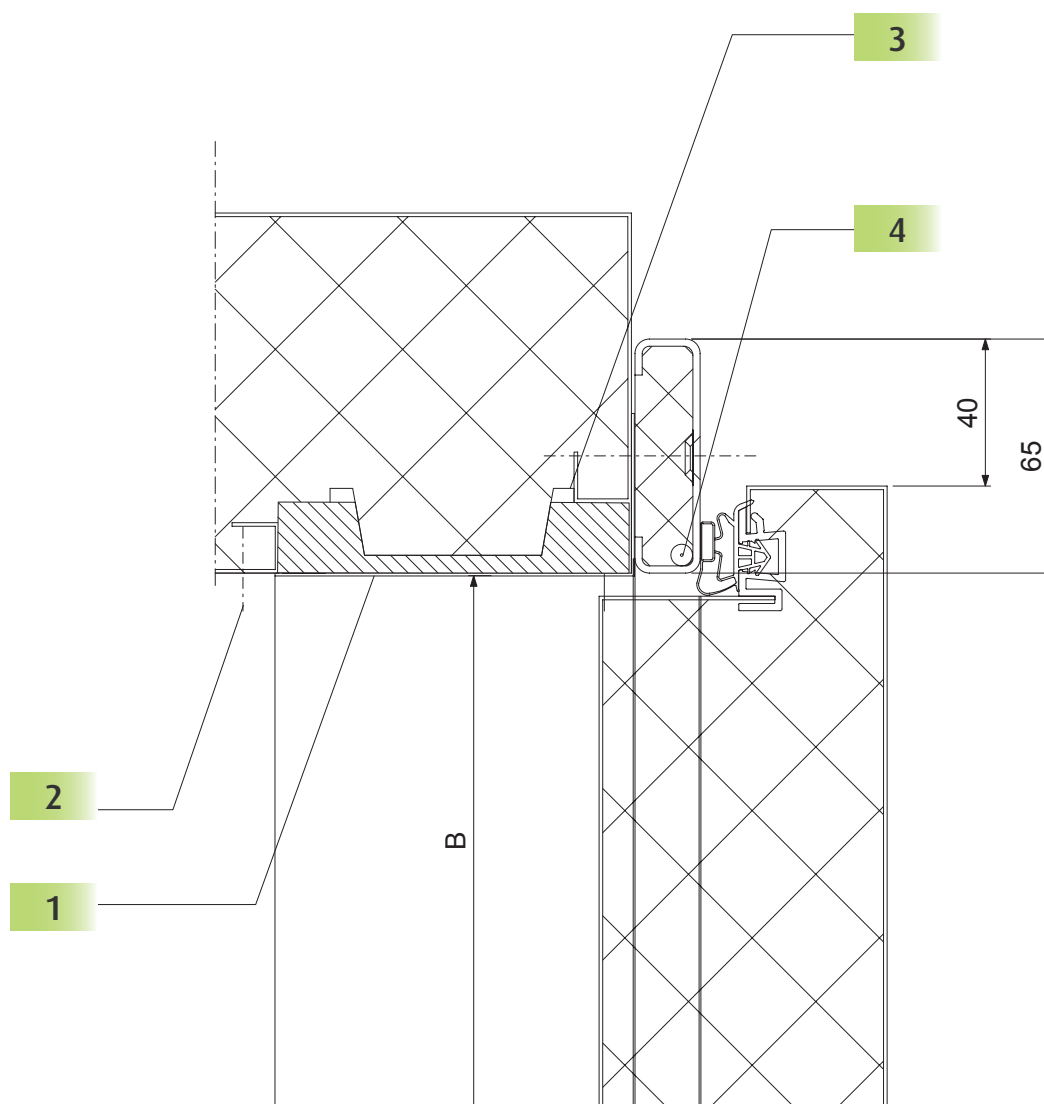


1. Plate screw $\text{Ø}3.5 \times 13$
2. Horizontal moulding B 33278
3. Plate screw $\text{Ø}5.5 \times 50$
4. PE seal (split)
5. Heating cable

Technical data

M doors

Door frame detail, top

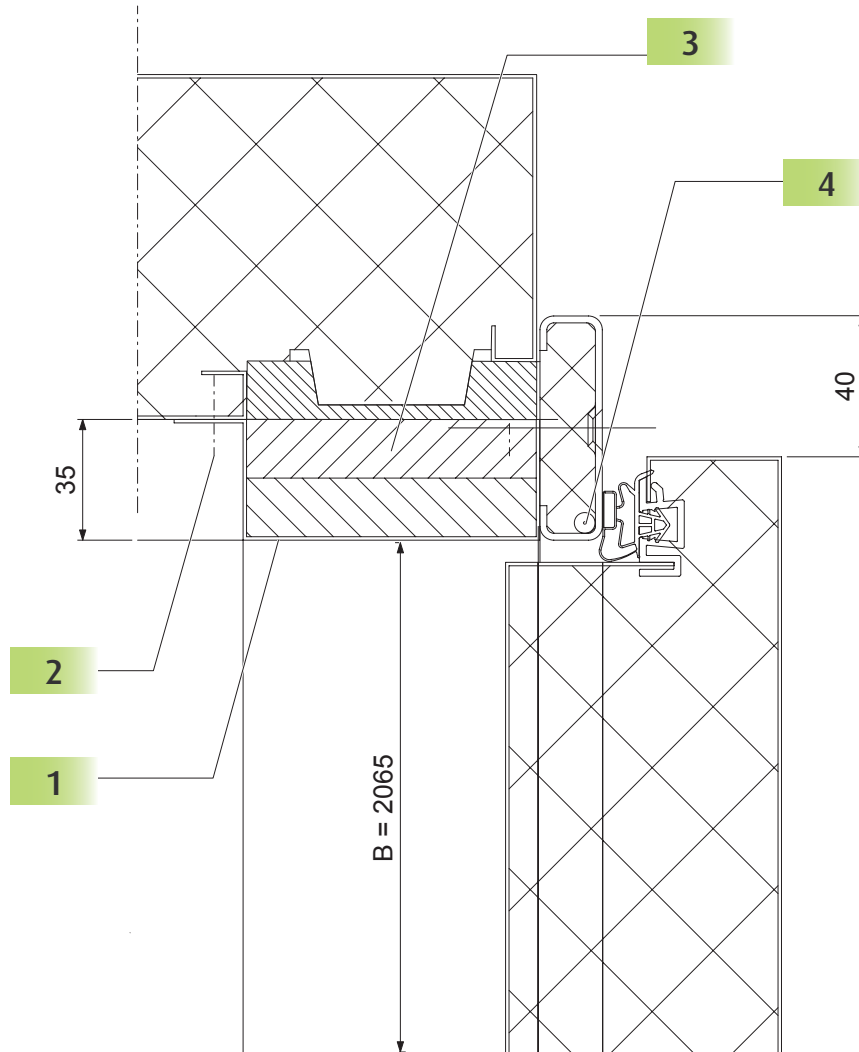


1. Horizontal moulding of clear opening
2. Pop rivet $\text{Ø}3.2 \times 6$
3. Seal
4. Heating cable

Technical data

M doors

Sweeper gasket door detail, top. Panel cut out height 2100 mm

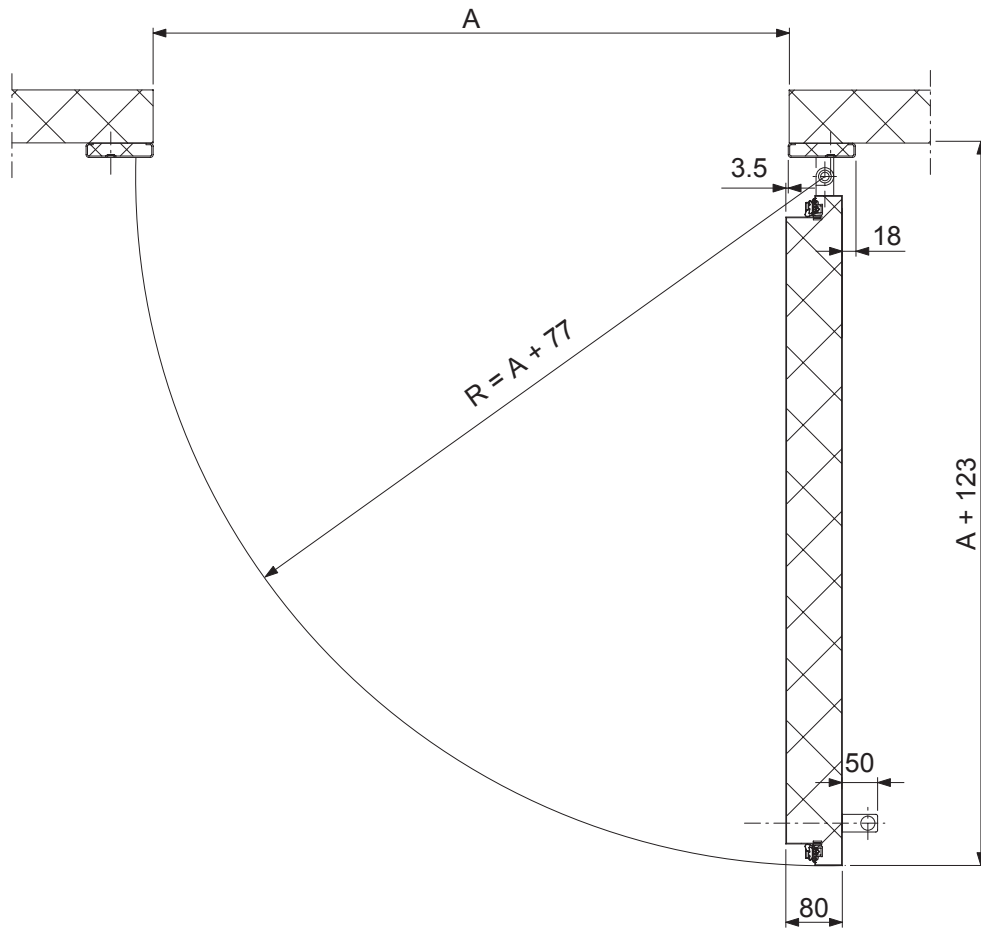


1. Horizontal moulding of clear opening
2. Pop rivet $\text{Ø}3.2 \times 6$
3. Seal
4. Heating cable

Technical data

M doors

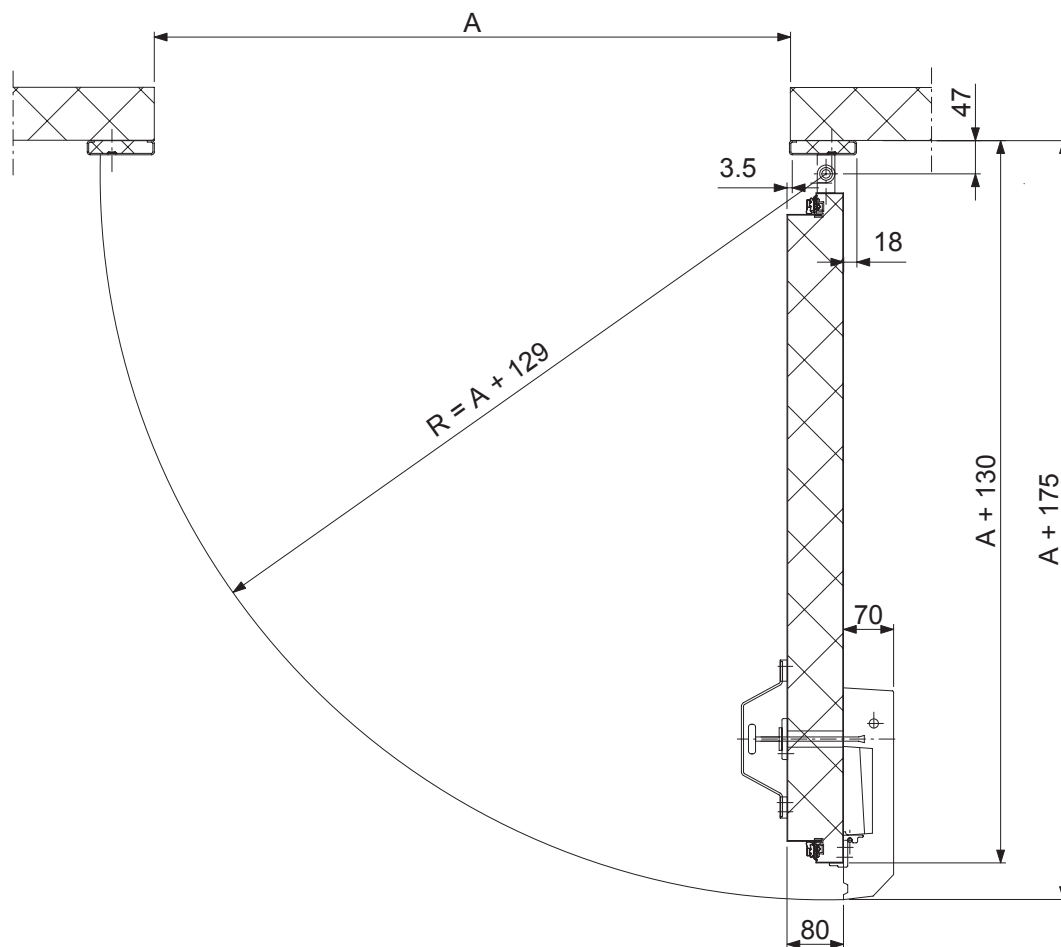
KHO-M and PHO-M door opening space requirement, door with a handle



Technical data

M doors

KHO-M and PHO-M door opening space requirement, door with a Jumbo 6000 lock



Technical data

M doors

Technical data

M doors

Porkka Finland Oy is an internationally recognised designer and manufacturer of Porkka insulated panels for cold room construction.

Porkka Finland Oy is an internationally renowned designer and manufacturer of insulated panels for cold room construction. As well as insulated doors, both hinged and sliding, marine fire retardant doors and specialist insulated enclosures with access hatches for food production. Clean rooms for the pharmaceutical and electronics industries is another sector where we excel.

Our factory is based in Ylöjärvi, Finland and has 14,000m² dedicated to insulated panel manufacturing and where our specialist doors and enclosures also are produced.

Porkka Finland Oy has over 70 years' experience in both design and production and has supplied rooms worldwide for numerous applications. We will continue to invest in both research and development to ensure our customers purchase efficient, cost effective and environmentally friendly products.

Porkka is a strong brand, well known for both supply and service in the refrigeration sector.



Porkka Finland Oy designs and manufactures to a quality standard ISO 9001 which is controlled and certified by Lloyd's Register Quality Assurance. We also hold the environmental certificate ISO 14001 which also has been issued by LRQA, where environment impact in production is kept to a minimum.

CE marked products. The manufacturer through continuous research and development reserves the right to change technical specification and design without notice.

Porkka Finland Oy reserves the right to make any changes without prior notice.

PORKKA
VALUE-ADDED REFRIGERATION

Manufacturer
Porkka Finland Oy
PL 127
FI-33101 Tampere
Tel. +358 20 5555 12
Fax. +358 20 5555 360
E-mail contact@porkka.com
www.porkka.com